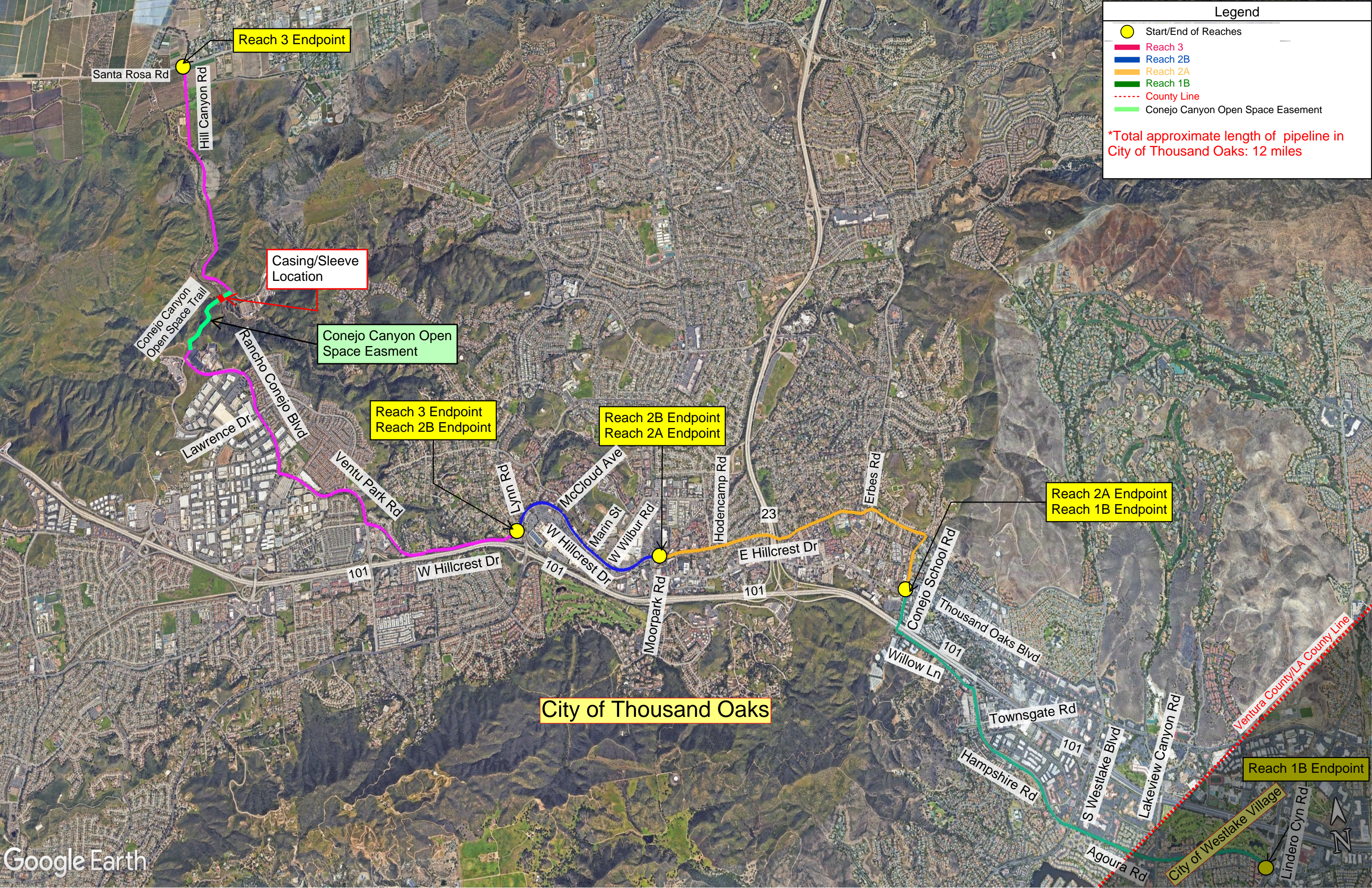


Legend

- Start/End of Reaches
- Reach 3
- Reach 2B
- Reach 2A
- Reach 1B
- County Line
- Conejo Canyon Open Space Easement

*Total approximate length of pipeline in City of Thousand Oaks: 12 miles



Reach 3 Endpoint

Santa Rosa Rd

Hill Canyon Rd

Casing/Sleeve Location

Conejo Canyon Open Space Trail

Conejo Canyon Open Space Easement

Rancho Conejo Blvd

Reach 3 Endpoint
Reach 2B Endpoint

Reach 2B Endpoint
Reach 2A Endpoint

Reach 2A Endpoint
Reach 1B Endpoint

Reach 1B Endpoint

City of Thousand Oaks

Ventura County/LA County Line

City of Westlake Village